

PRODUCT CODE:

PTFE SKIVED TAPE — VIRGIN

COLOUR: NATURAL WHITE

9150

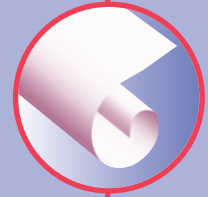
COLOUR: NATURAL ONE SIDE, ETCHED ONE SIDE

9151

STOCK NUMBER	THICKNESS INCHES	WIDTH INCHES	TOLERANCE + / -	LBS./SQ.FT. APPROX.
9150 002 12	0.002	12	0.0002	0.024
9150 003 12	0.003	12	0.0002	0.036
9150 003 24	0.003	24	0.0005	0.036
9150 005 12	0.005	12	0.0005	0.060
9150 005 24	0.005	24	0.0005	0.060
9150 010 12	0.010	12	0.001	0.120
9150 010 24	0.010	24	0.001	0.120
9150 015 12	0.015	12	0.001	0.180
9150 015 24	0.015	24	0.001	0.180
9150 020 12	0.020	12	0.0015	0.240
9150 020 24	0.020	24	0.0015	0.240
9150 031 12	0.031	12	0.002	0.360
9150 031 24	0.031	24	0.002	0.360
9150 031 48	0.031	48	0.002	0.360
9150 062 12	0.062	12	0.005	0.720
9150 062 24	0.062	24	0.005	0.720
9150 062 48	0.062	48	0.005	0.720
9150 093 12	0.093	12	0.005	1.120
9150 093 24	0.093	24	0.005	1.120
9150 125 12	0.125	12	0.010	1.500
9150 125 24	0.125	24	0.010	1.500
9150 125 48	0.125	48	0.010	1.500
9151 031 48	0.031	48" Roll	0.002	0.36
9151 062 48	0.060	48" Roll	0.005	0.72
9151 125 48	0.125	48" Roll	0.010	1.50

PROPERTIES

- Excellent dielectric strength.
- Low coefficient of friction.
- Essentially chemically inert.
- Virtually unaffected by weather.
- Continuous service at -450°F to 500°F.
- Bondable as etched one side.
- Produced from resin compatible with food contact.
- Meets or exceeds Mil P22241A.



TYPICAL APPLICATIONS

- Gaskets
- Antistick linings
- Curling shoe soles
- Electronic equipment
- Seals

- Available up to 72" wide.
- Available in glass filled.
- Additional thickness from 0.001" to 1/4".
- Slit widths available from 1/2" to 72".

